

RETAIL/FLEX SPACE



FOR LEASE
NOW AVAILABLE

421 Terrace Dr. | Kannapolis, NC 28083

This unique and highly functional space features an open floor plan and generous parking. The property location is in close proximity to Downtown Kannapolis (2 mins), I-85 (5 mins), and nearby amenities. Formerly operated as a daycare, it is easily adaptable for similar uses. This building offers flexibility, catering to the needs of a wide range of businesses.

- ✓ \$6,000 MONTH / \$17.15 PSF
- ✓ 4,200 SQ. FT. AVAILABLE
- ✓ GC - COMMERCIAL ZONING
- ✓ +/- 25 PARKING SPACES
- ✓ 4 DRIVE-IN DOORS
- ✓ MEZZANINE OFFICE SPACE

**All information needs to be independently verified.*

EXTERIOR PHOTOS



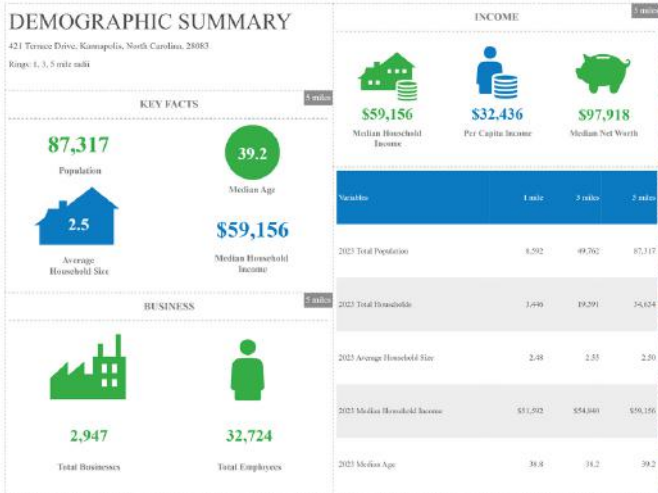
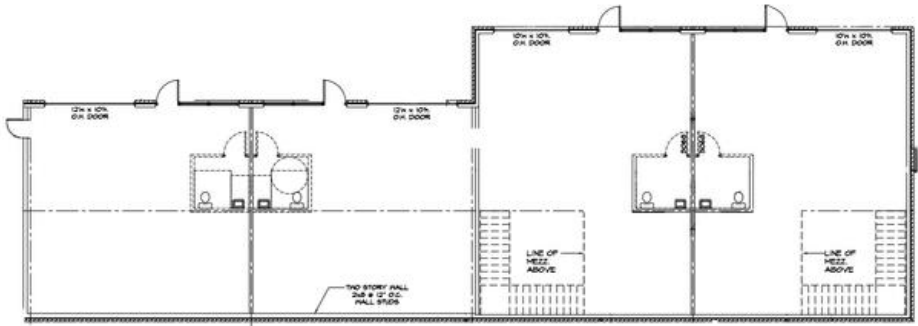
INTERIOR PHOTOS



ADDITIONAL PHOTOS



FLOOR PLAN & DEMOGRAPHICS



Source: This infographic contains data provided by Esri (2023, 2020), Esri-Data-Ashe (2023). © 2023 Esri



Isaac Nifong
Broker
980.351.0230
IsaacN@newbranchre.com



Ryan Kinney
Broker
704.778.6100
RyanK@newbranchre.com