

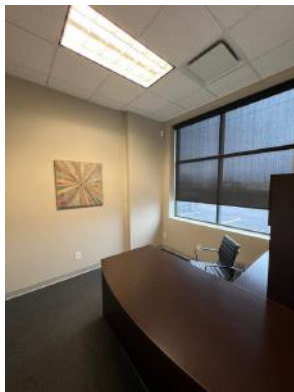
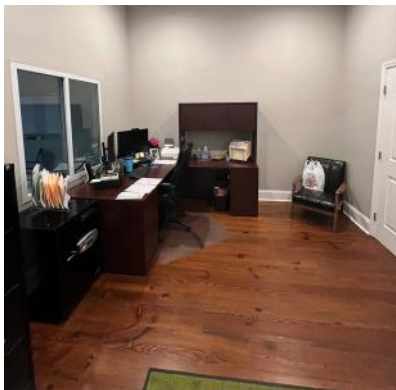
41 ODELL SCHOOL RD. UNIT B & C , CONCORD, NC 28027



FOR SALE:
\$900,000

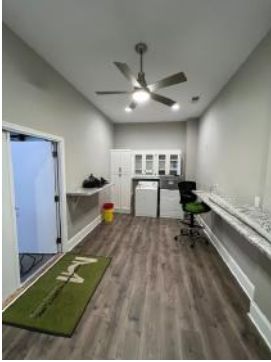
41 Odell School Rd. Unit B & C, CONCORD, NC
Parcel ID:46809852454102 & 46809852454103

- For Sale: 4,800 SF Flex Industrial Condos (Unit B & C)
- +/- 3,125 SF Warehouse/ 1,675 SF Office
- Units are in move in ready condition with very functional layout
- Zoning: I-1- CU (City of Concord Zoning)
- Each unit has their own entrance. Two drive in doors (10' x 12')
- Approx. 16.5' ft clear height under beam in warehouse
- Condo association dues are \$6,072 annually/ \$506 per month
- Units located in the professionally managed Odell Business Center
- Immediate access to I-85/485, Concord Airport, and other area attractions



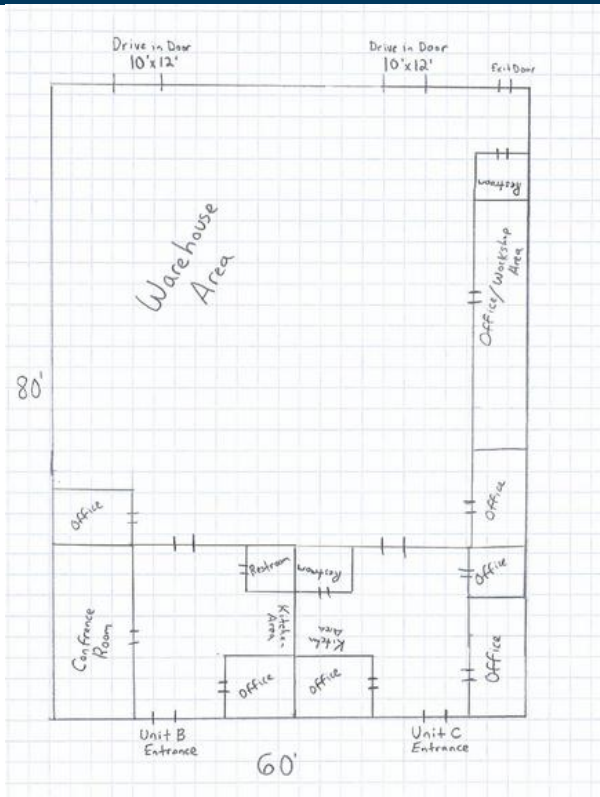
Reid Baker | 704.402.4323

Reidb@newbranchre.com



Reid Baker | 704.402.4323

Reidb@newbranchre.com



Floor Plan

**approximate and not drawn to scale*

Reid Baker | 704.402.4323

Reidb@newbranchre.com