

+/- 2,050 SF OFFICE



FOR LEASE
NOW AVAILABLE

10616 Metromont Pkwy #208 | **Charlotte, NC 28269**

This office suite offers an excellent setting for a variety of professional or medical office uses. With plentiful light and large offices, it is move-in ready and available immediately.

Easy access to both I-77 and I-485 with plenty of amenities nearby. Less than 15 minutes to Uptown Charlotte, Charlotte Douglass International Airport, or Lake Norman.

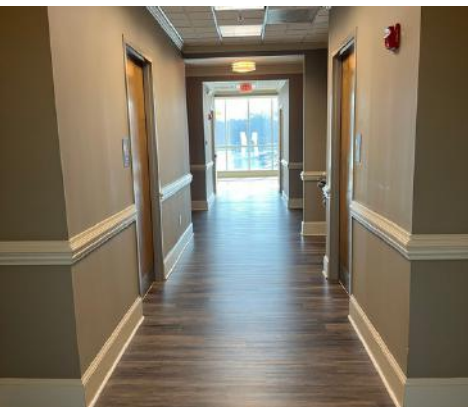
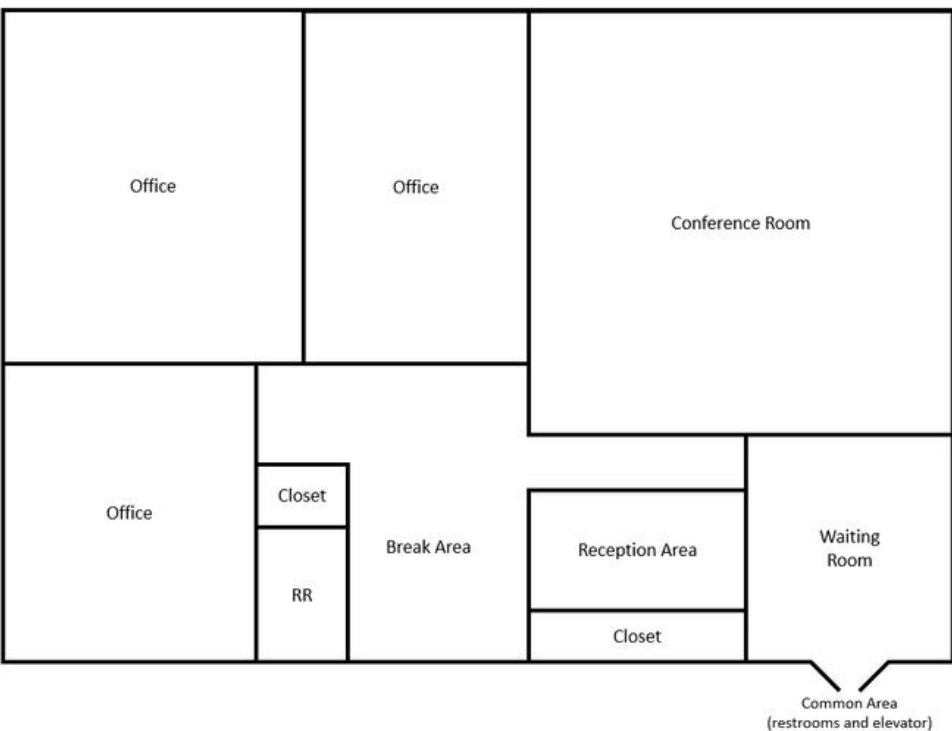
- ✓ \$4,800/MONTH (\$28/SF)
- ✓ +/- 2,050 RENTABLE SQ. FT.
- ✓ NEAR I-77 & I-485
- ✓ SHARED RESTROOMS
AND LOBBY
- ✓ AMPLE PARKING

**All information needs to be independently verified.*

+/- 2,050 SF OFFICE - 10616 METROMONT PKWY



+/- 2,050 SF OFFICE - 10616 METROMONT PKWY



+/- 2,050 SF OFFICE - 10616 METROMONT PKWY



Andrew Castrodale
Broker
980.354.3738
AndrewC@newbranchre.com

