



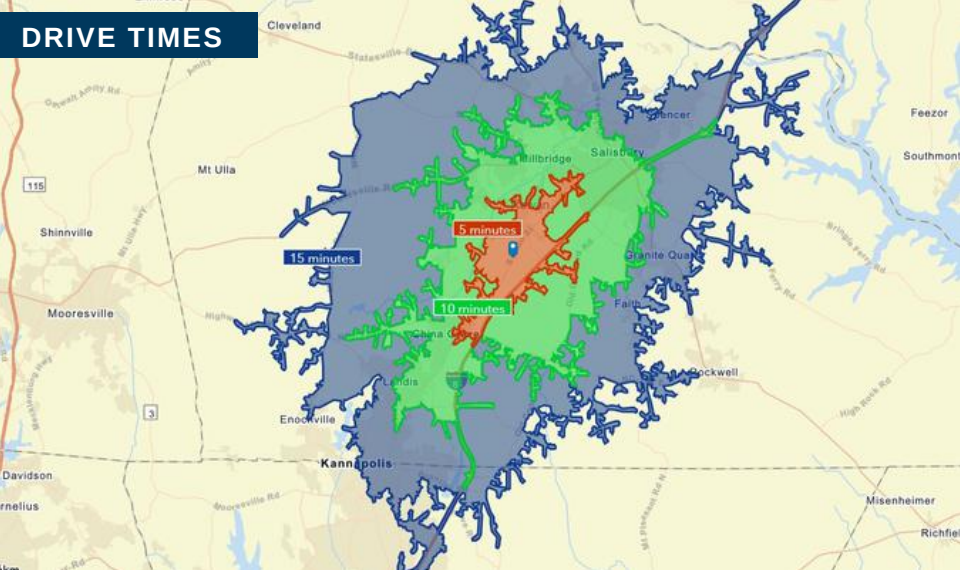
COMMERCIAL ACREAGE AVAILABLE

FOR SALE • 15.74 ACRES • SALISBURY, NC

Great opportunity on the growing corridor of Highway 29 / Main Street just South of Downtown Salisbury. Over 15 acres available for wide range of commercial development. City water access at the street. The majority of the acreage is clear, maintained, and has been used for pasture. Access to I-85 and Salisbury airport add to increased market demand.

- TAX PARCEL 477 033
- PRICE \$785,000
- CBI-1 ZONING (ROWAN COUNTY)
- 15.74 ACRES
- 350' FRONTAGE ON HWY 29
- IMMEDIATE ACCESS TO I-85
- FLAT TOPOGRAPHY

DRIVE TIMES



MARKET DEMOGRAPHICS

	1 Mile	5 Miles	10 Miles
<i>Population</i>	1,908	45,758	100,725
<i>Median HH Income</i>	\$57,094	\$54,270	\$55,346
<i>Daytime Population</i>	2,205	41,486	93,520



Cate Davis

Broker

704.786.8888

CateD@newbranchre.com



Mark Hermans

Broker

704.879.3667

MarkH@newbranchre.com



new branch
REAL ESTATE ADVISORS