

1,826 SF OFFICE BUILDING



FOR SALE
NOW AVAILABLE

708 Arbor Street NE, | Concord NC 28025

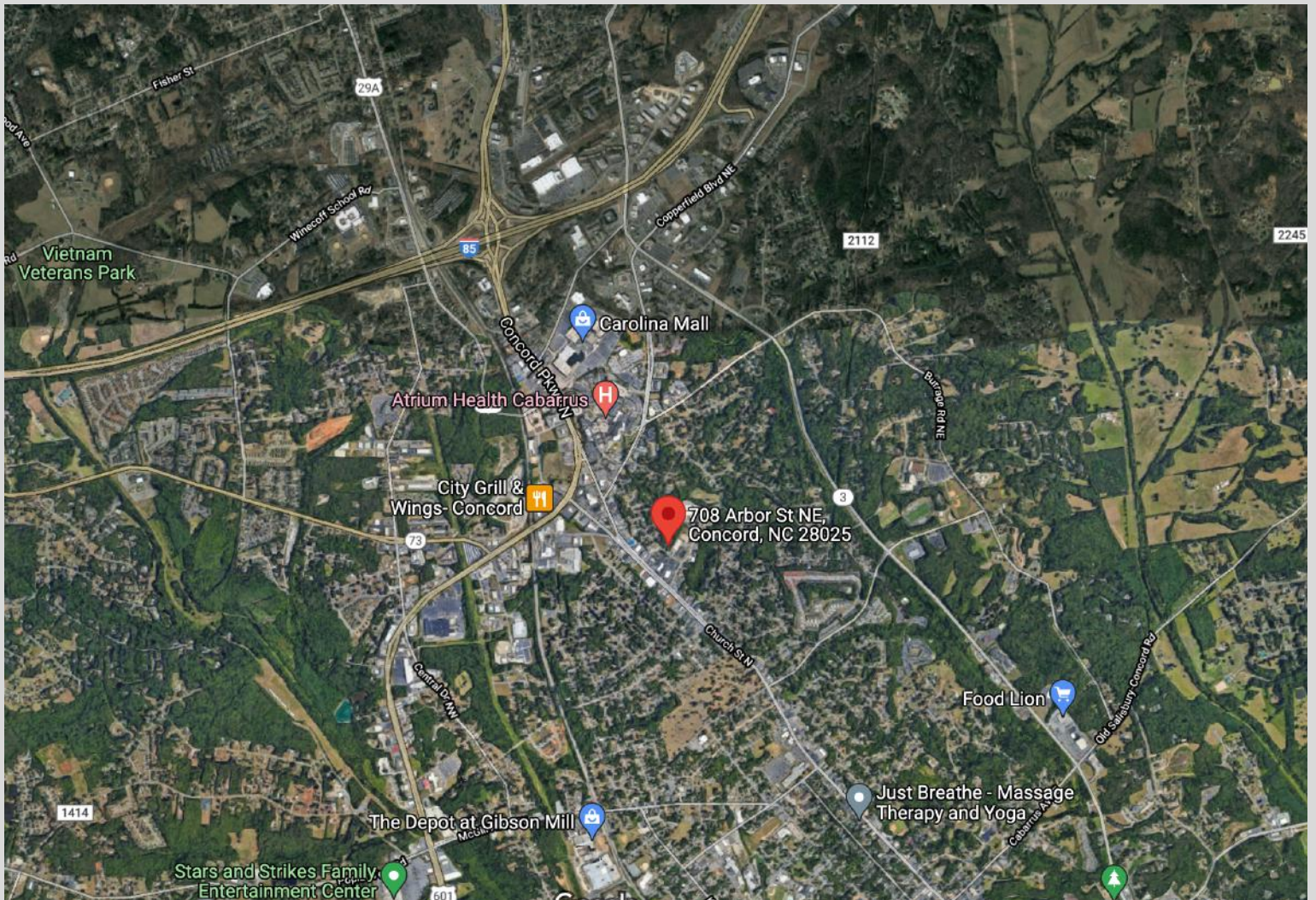
This freestanding office building that was a former day care, is suitable for a variety of small businesses. This property could be great for an insurance office, financial services, attorneys office, day care, etc. Less than 5 miles from I-85, downtown Concord, CMC Northeast, Hospitals, banks, restaurants, retails centers, gyms, and more more.

- ✓ SALES PRICE: \$365,000 (\$199 PSF)
- ✓ +/- 1,826 TOTAL SQ. FT.
- ✓ ± 1.27 ACRES
- ✓ AREA TO EXPANSAND
- ✓ C-1 COMMERCIAL ZONING
- ✓ AMPLE PARKING SPACES

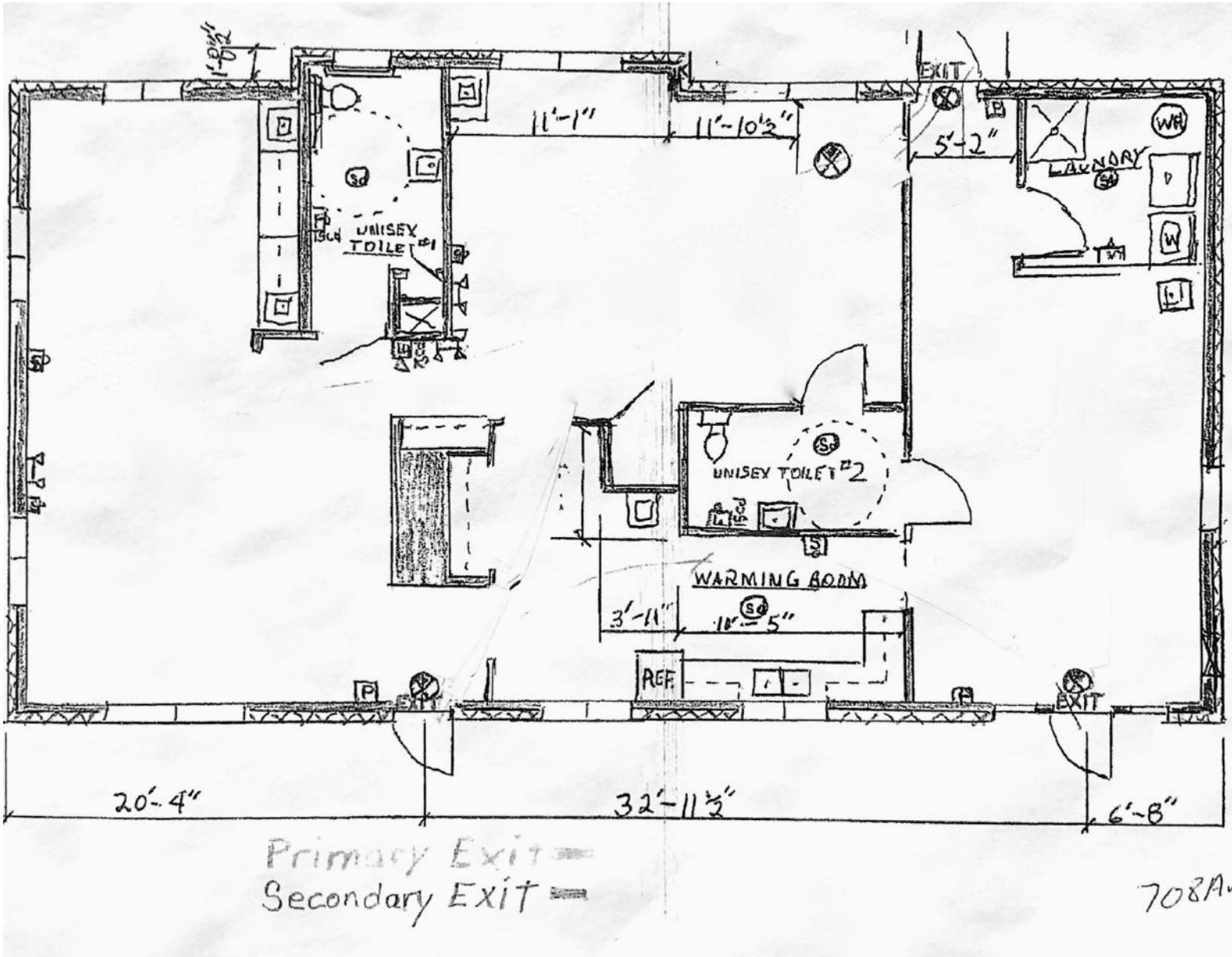
708 ARBOR STREET NE, CONCORD NC 28025



271 EXECUTIVE PARK DR NE - AERIAL



FLOOR PLAN



*Source 2019 Esri Business Analyst



Ryan Kinney
Broker
704.778.6100
RyanK@newbranchre.com



Doug Donia
Broker
704.707.6648
DougD@newbranchre.com