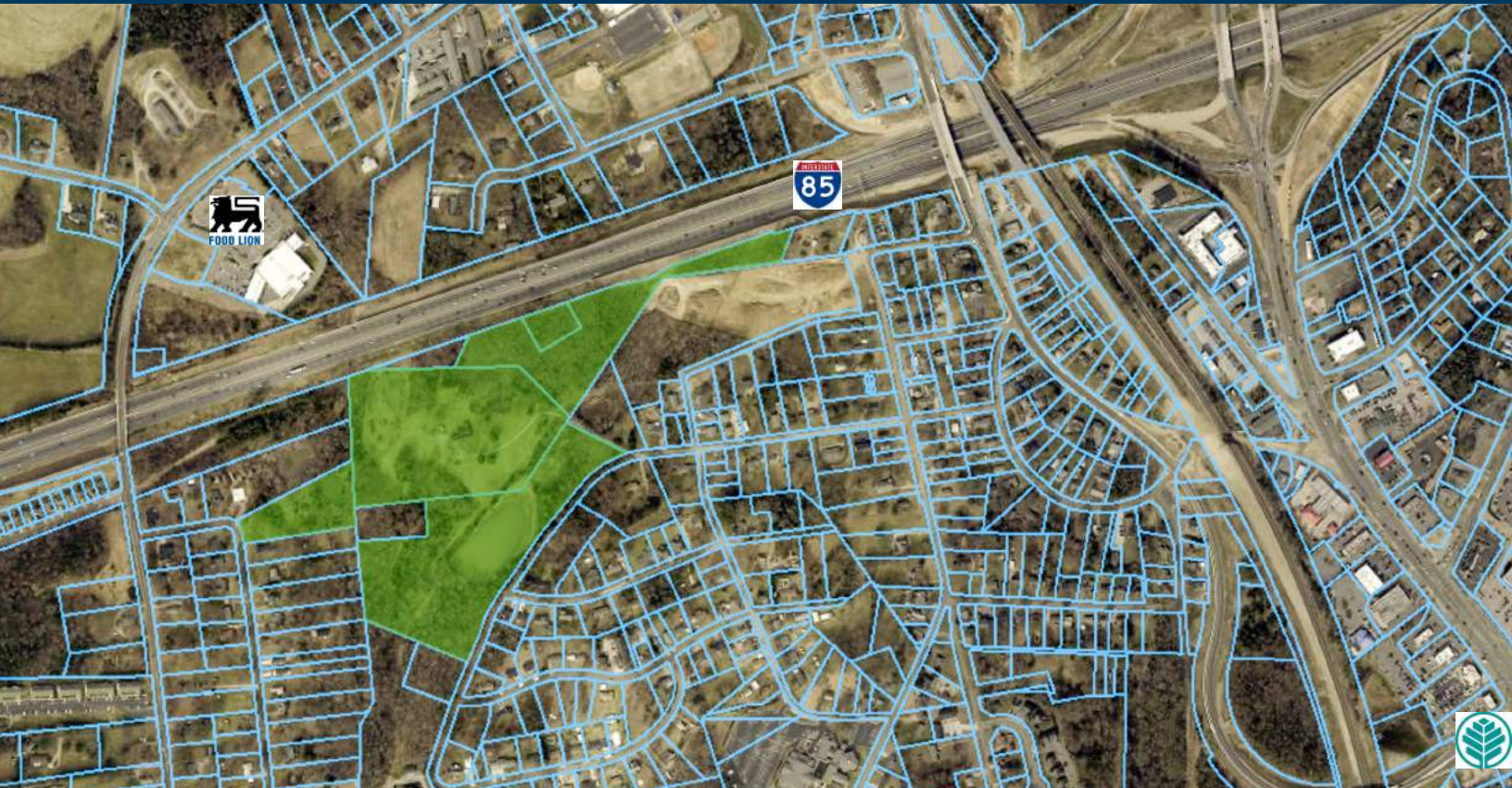


WINECOFF SCHOOL RD, KANNAPOLIS NC



**For Sale -**

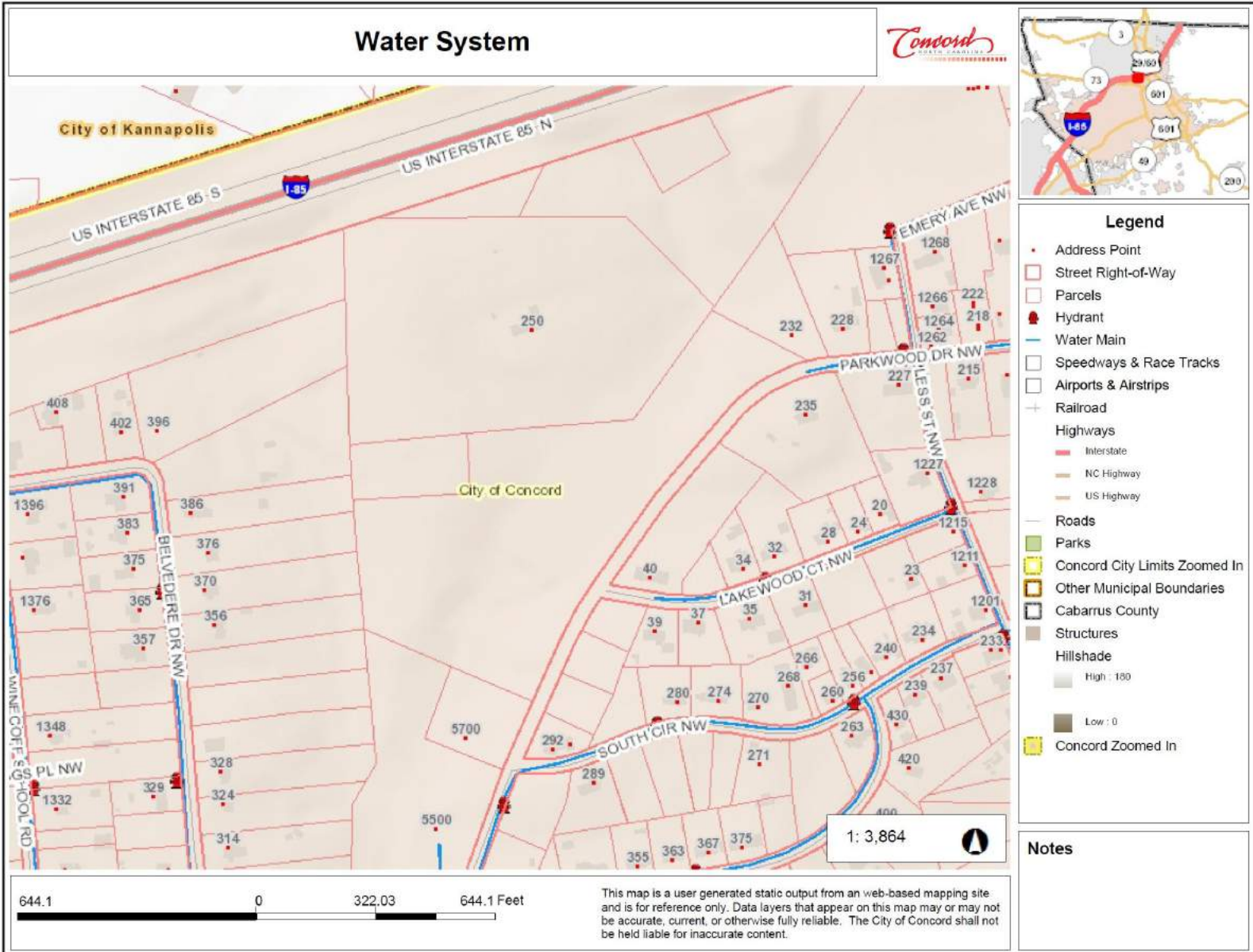
**+/- 33.59 acres, Zoned RC (15 units per acre)**

- Multiple access points from Belvedere Dr and Parkwood Dr.
- Water and Sewer On Site.
- Man made pond viewable in aerials has breached and is draining, further analysis needed.
- Easy access to many amenities such as shopping, grocery, Atrium Health Northeast hospital.
- Zoned RC, Allowing For Up To 15 Units Per Acre.
- City of Concord Jurisdiction, City of Kannapolis Address.
- Asking \$70,000/Acre (\$2,351,300)
- PIN#'s 56117924040000, 56117839250000, 56117977290000, 56117969440000, 56116951160000

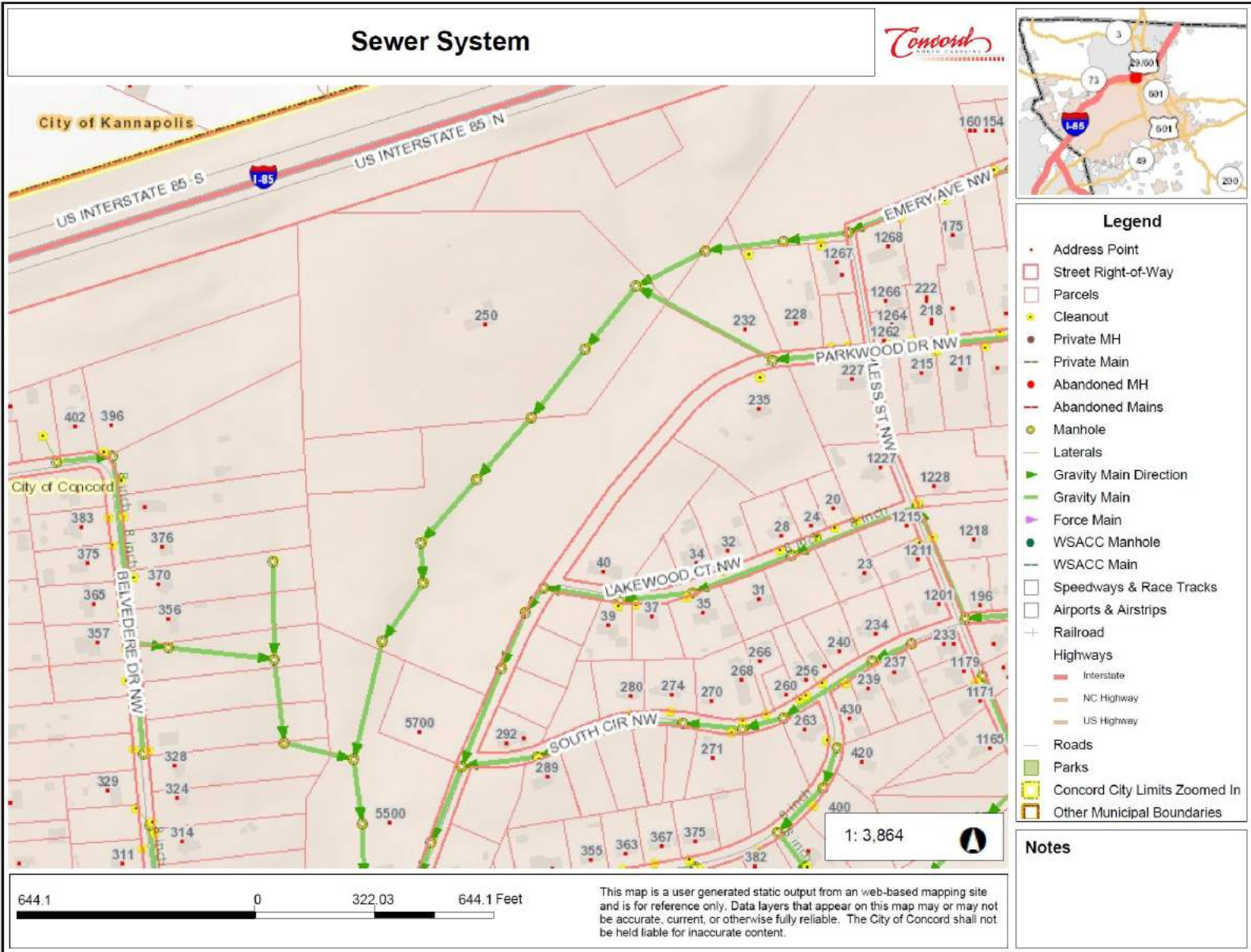




## WINECOFF SCHOOL RD, KANNAPOLIS NC



## WINECOFF SCHOOL RD, KANNAPOLIS NC



WINECOFF SCHOOL RD, KANNAPOLIS NC



**Doug Donia | 704.786.8888**

DougD@newbranchre.com



**Andrew Castodale | 704.786.8888**

AndrewC@newbranchre.com