

75.3 ACRES
INDUSTRIAL LAND



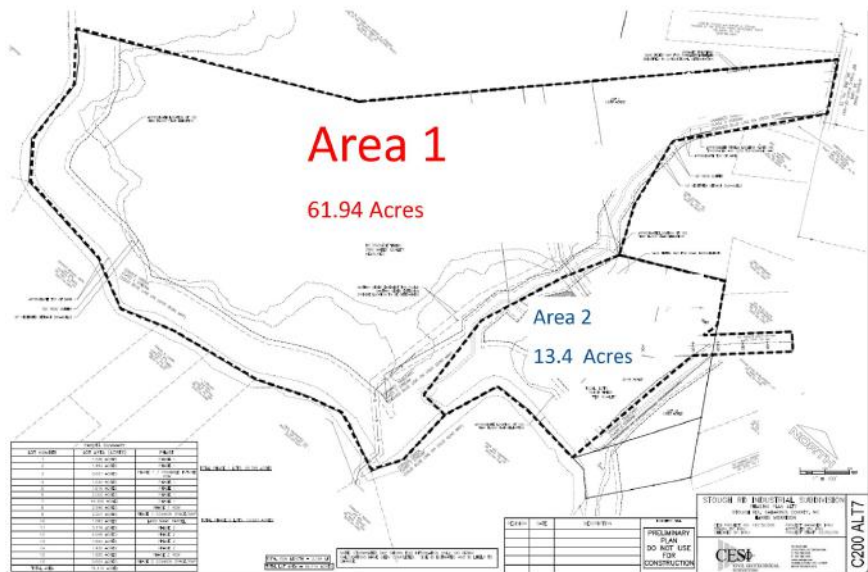
FOR SALE
NOW AVAILABLE

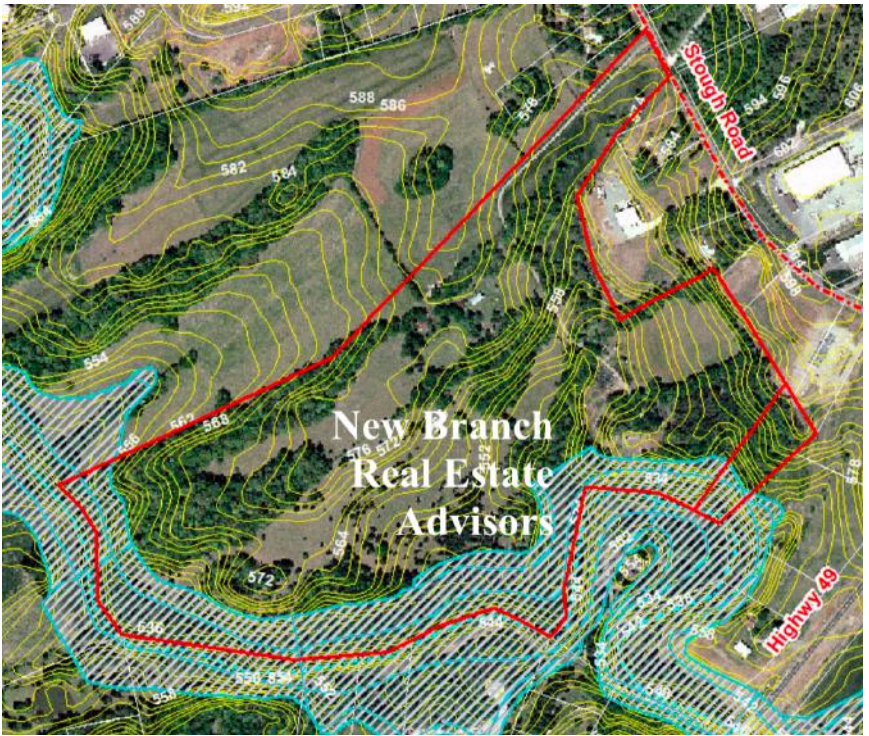
Stough Road | Concord, NC 28025

+/- 75.3 Acres in Cabarrus County, outside of Concord city limits. Situated along Stough Rd., property is located in a high growth area. The property is comprised of open fields and partially wooded areas. 6 Miles from I-485, 7 miles from I-85, and less than 1 mile to Hwy 49. Owner would consider subdivision. Minimum divisible land would be approximately +/- 62 acres.

- ✓ \$3,689,700 PURCHASE PRICE
- ✓ \$49,000/ ACRE
- ✓ ZONED LIGHT INDUSTRIAL
- ✓ ACCESS TO WATER
- ✓ SEWER ACCESS NEARBY

**All information needs to be independently verified.*





MARKET DEMOGRAPHICS

	1 Mile	3 Miles	5 Miles
<i>Population</i>	1,998	30,056	84,613
<i>Median HH Income</i>	\$74,665	\$63,738	\$62,359

*Source 2017 CoStar



Harris Morrison, CCIM
 Broker
 704.786.8888
 HarrisM@newbranchre.com



Ryan Kinney
 Broker
 704.778.6100
 RyanK@newbranchre.com